

COMMERCIAL Examples (A)

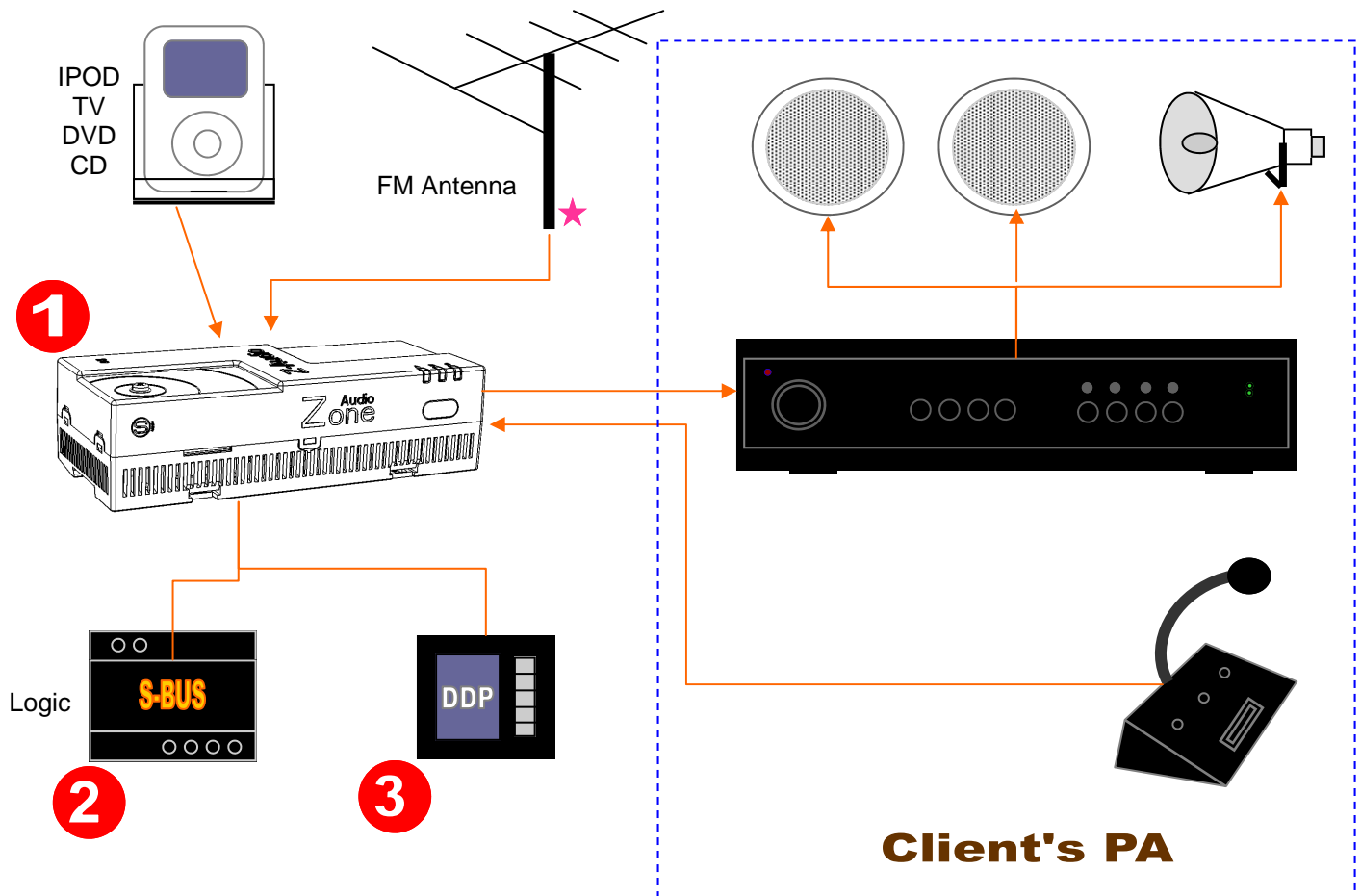
Mosques and Prayer Halls: Announce Prayer according to Timers, Announce Duaa

Factories: Play BGM, Ding on Shifts (As Time Clock)

Hotels, Hospitals, and Malls: BGM, Announce Promotions, Working Hours

Schools: Ding Different Bills according to Class Start/End Schedules, Play national Anthem, BGM ++

System Assembly DIAGRAM



Special PARTS LIST

- 1** Zone Audio Source Drive with SD card and simple Power Supply: SB-Z-AUDIO2
- 2** Logic Module: SB-Logic2 –DN
- 3** DDP: SB-DDP-EU (Select and Display: Song, Track, Duration, Genera, Album, Volume Level)

COMMERCIAL Examples (B)

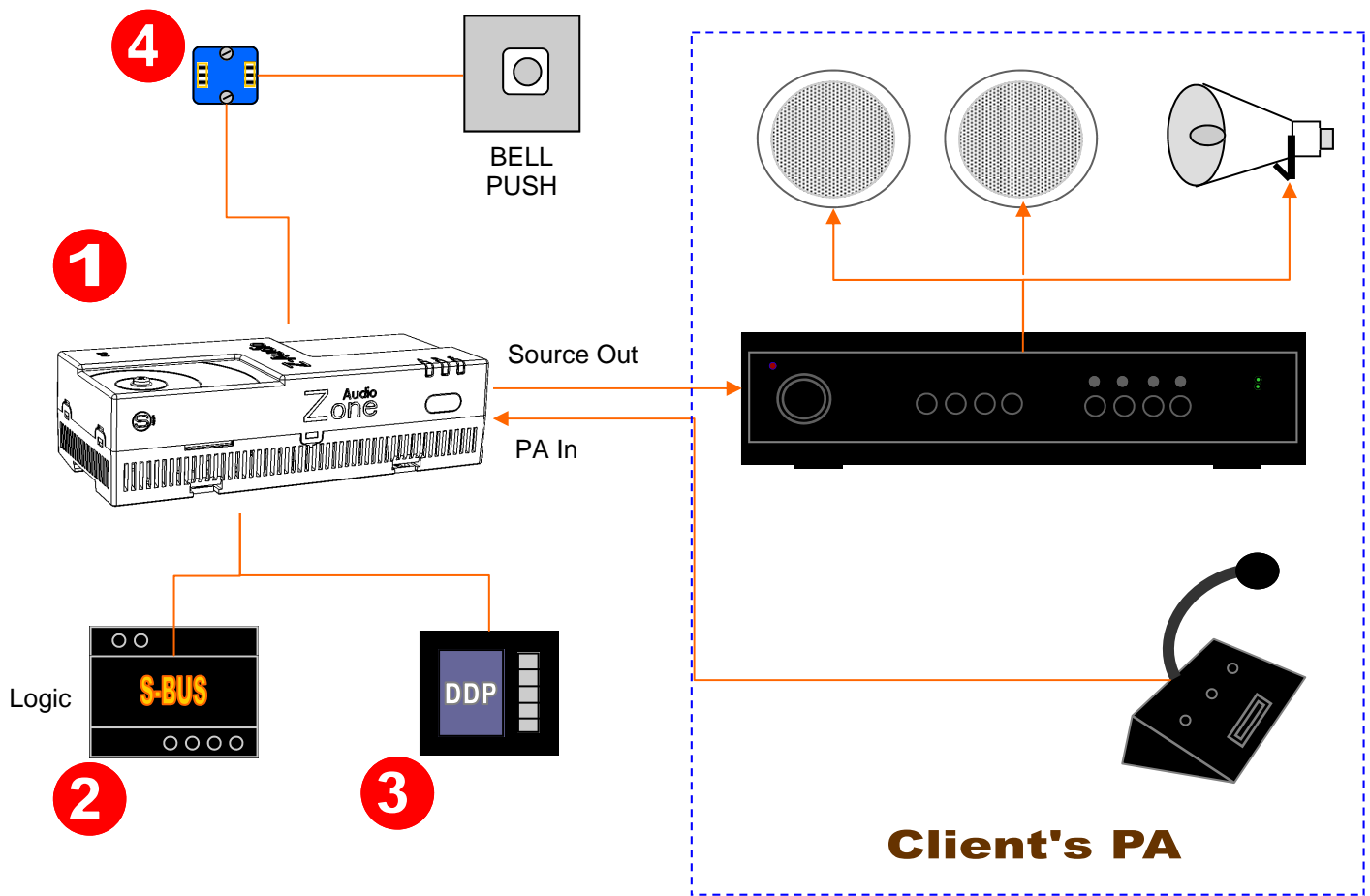
Department Stores: BGM, Greeting, Service Call Requests Per Zone, Closing Time Announcements

Museums and Galleries: Speak About The Displayed Items in Different Languages

Offices: BGM, or On Hold Promotional Advertisement, Or Fire Evacuation Announcements

Governmental & Immigration Queuing: Repeat Documents List, Behavior Rules, and Instructions

System Assembly DIAGRAM



Special PARTS LIST

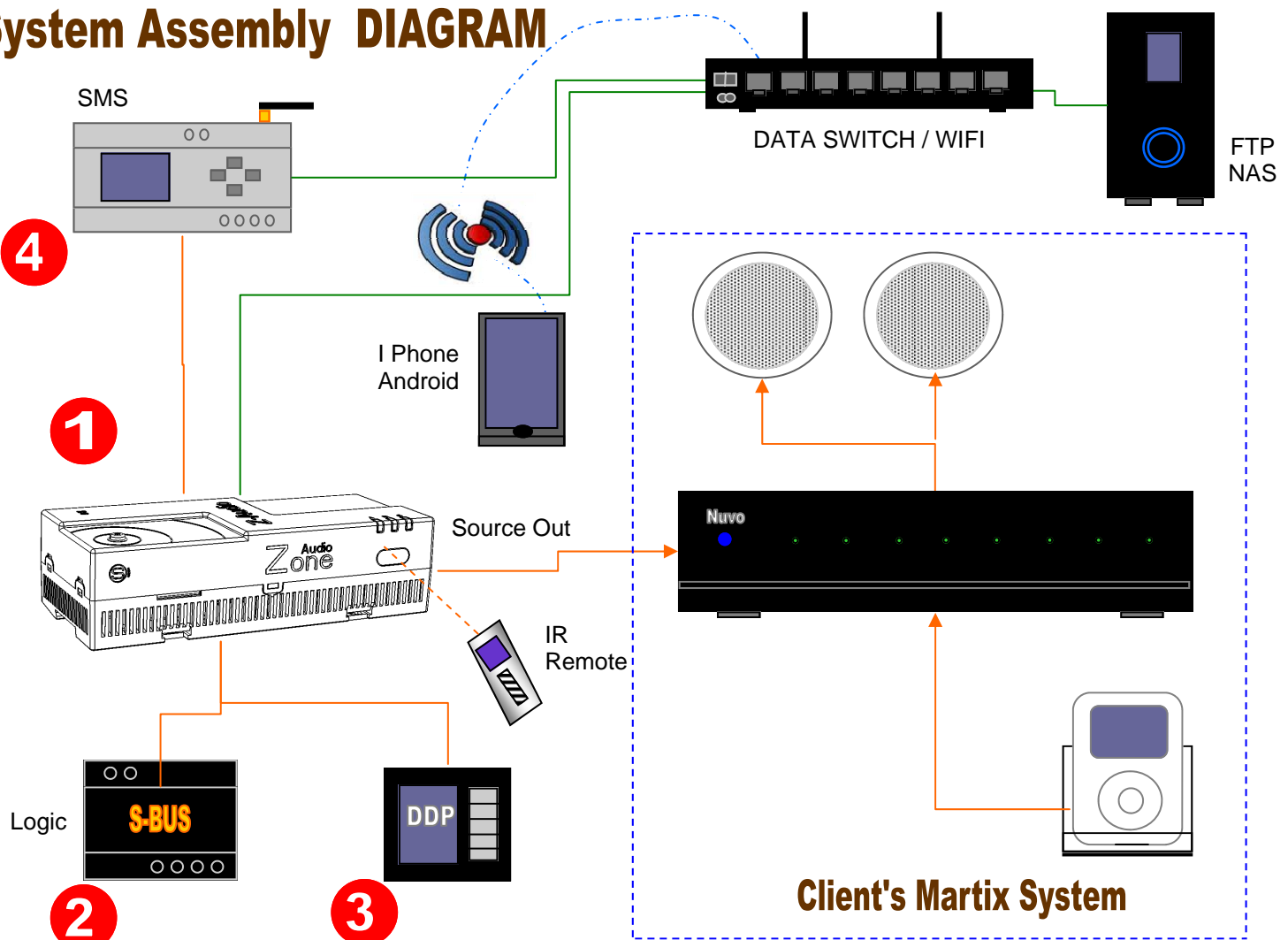
- 1** Zone Audio Source Drive with SD card and simple Power Supply: SB-Z-AUDIO2
- 2** Logic Module: SB-Logic2-DN
- 3** DDP: SB-DDP-EU (Select and Display: Song, Track, Duration, Genera, Album, Volume Level)
- 4** 4-Z: SB-4Z-UN (Connect Push Buttons, Motion Trigger sensors to Announce as Needed)

RESEDENTIAL Examples (A)

Using Z-Audio as Digital Streaming Source for Third Party Matrix System:

In This Case, Z-Audio Shall Act as Audio Digital Streaming Box from NAS and Any Other LAN Connected PC's HDD. Also can Stream from Local SD Card Content. Client can Choose and control Source and Tracks or Volume Using DDP-M, Hand Held Androids, or PC Devices. Optional: SMS Card & GPRS Module Can Be Added to Send SMS from any Mobile Phone & Announce Remotely Using TTS Technology

System Assembly DIAGRAM



Special PARTS LIST

- 1** Zone Audio Source Drive with SD card and simple Power Supply: SB-Z-AUDIO2
- 2** Logic Module: SB-Logic2-DN
- 3** DDP: SB-DDP-EU (Select and Display: Source, Song, Track, Duration, Genera, Album, Volume Level)
- 4** SMS Module SB-DN-SMS/IP (Add Optional TTS "Test To Speech" card inside Z-Audio)

RESIDENTIAL Examples (A) Continued .

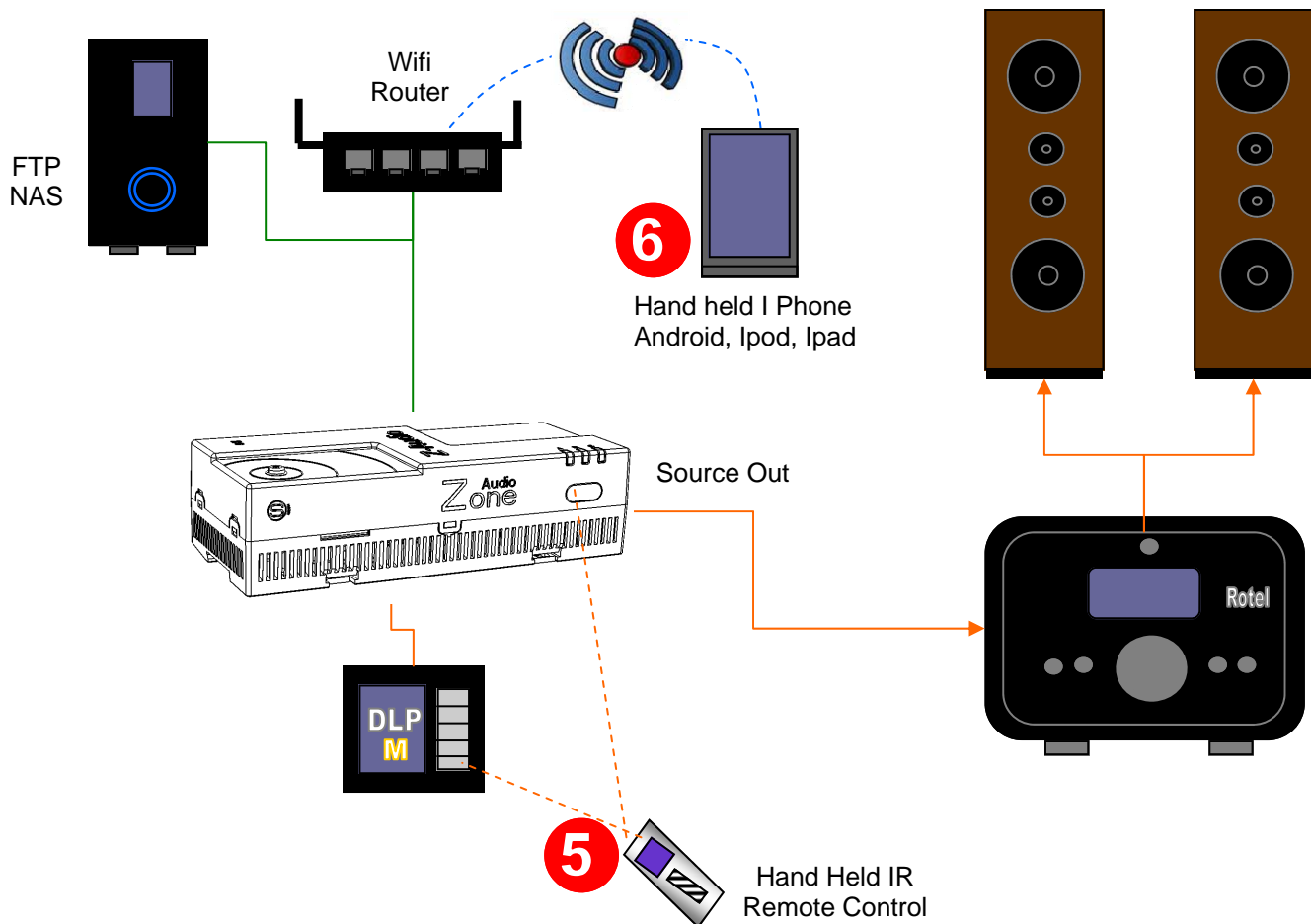
Using Z-Audio2 as Digital Streaming Source for Third Party Matrix System:

Continued ...

BENEFITS and FEATURES

Using Z-Audio Adds many features to The Third Party System at Very Affordable Prices

- 1- Ability to Play From SD card Storage Directly
- 2- Ability to stream Audio from Network Accessible Storage HDD
- 3- Ability to Stream Audio form PC's and Other LAN Connected Devices
- 4- Ability To Play FM Radio From Z-Audio Embedded Tuner **
- 5- Ability to Connect Auxiliary Source like Ipod, TV, DVD, CD, Etc. and Z-Audio Act as Analogue switch
- 6- Ability to Send Text Message from Network Connected PC & Z-Audio TTS Card** shall Read it out.
- 7- Ability To Send SMS Message from Mobile Remotely Then Z-Audio TTS Card ** Shall Read it out
- 8- Ability To Control Source, Volume, Track ++ remotely Using IR Hand held remote Control

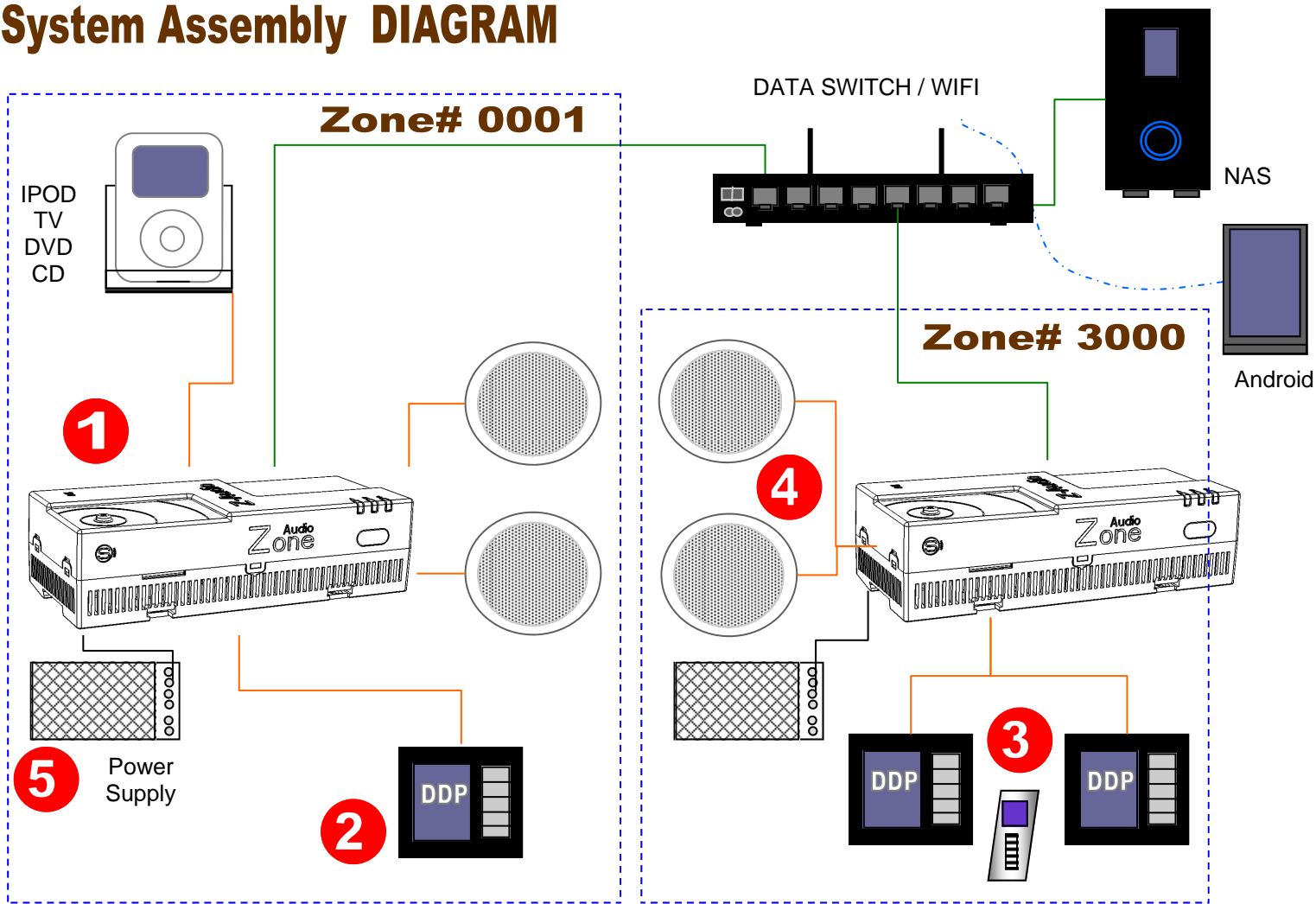


RESEDENTIAL Examples (B)

Using Z-Audio as Digital Distributed Multi-Zone Audio System:

In This Case, One or More Z-Audio can be Used as Needed, where every Zone Can Listen to Totally Different Music, Also Z-Audio Shall Act as Audio Digital Streaming Box from NAS and Any Other LAN Connected PC's HDD. It can Play from Local SD Card Content. Client can Choose and control Source and Tracks or Volume Using DDP-M, Hand Held Androids, or PC Devices.

System Assembly DIAGRAM



Special PARTS LIST

- 1** Zone Audio Source Drive with SD card and simple Power Supply: SB-Z-AUDIO2
- 2** DDP SB-DDP-EU (Select and Display: Source, Song, Track, Duration, Genera, Album, Volume Level)
- 3** Hand Held remote: SB-HHR
- 4** Resound Ceiling Speakers: RS-C65P

How To Make Simple Islamic Automatic Athan?

Using Z-Audio2 For Islamic Prayer Announcement:

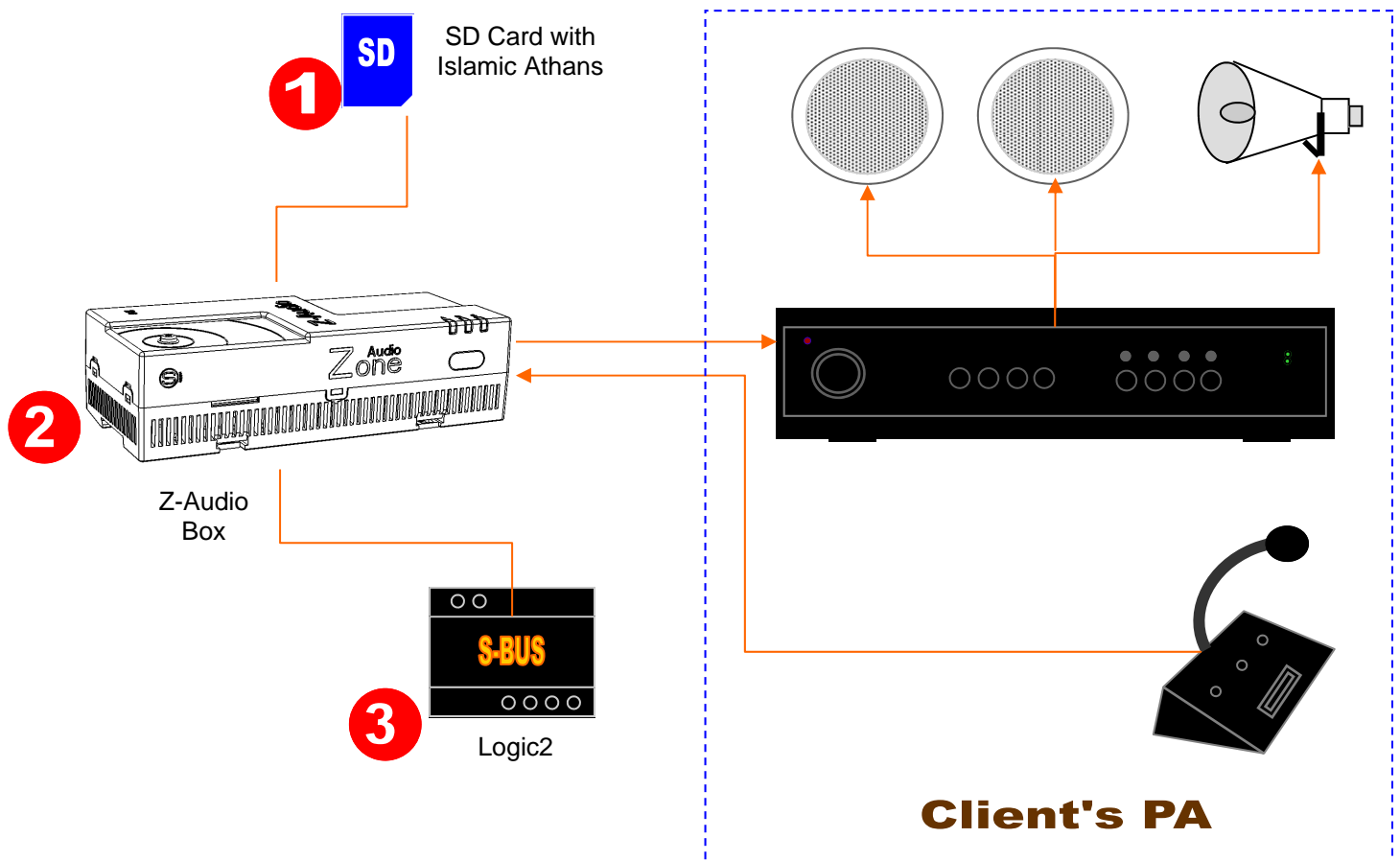
All you Need is to Have is

- 1-SD card With Islamic Athans (A Recorded Fajr Athan on Track 1, & Second Athan on Track 2)
- 2- Z-Audio
- 3- Logic Control with built in Islamic Time Clock

STEPS of IMPLIMENTATION

S-Logic Is Ready with Thousands of World Cities and Has The Prayer calculations according to Longitude and latitude astrological calculations Built in the system ready for 99 years to come. Steps To Do:

- 1- Connect System to Mosque PA System as Per the Diagram Below
- 2- Make 2Flags In The Program of the Logic Module One for Each Prayer Announcement Type
- 3- Using The Ready Athan Section in S-BUS Logic Module, Link Flags to corresponding Prayer Type.
- 4- At Time of Prayer, corresponding Flag start, At End of Flag Power Off system till next Prayer Time
(Simply: Prayer Time = On System, Play Track, Off System)



Ingredients: 1 Z-Audio, 1 SD CARD, 1 Logic Module, 1 Power Supply.

How To Make Simple Religus Prayers Play Automatic?

Using Z-Audio For Religious Prayer Announcement:

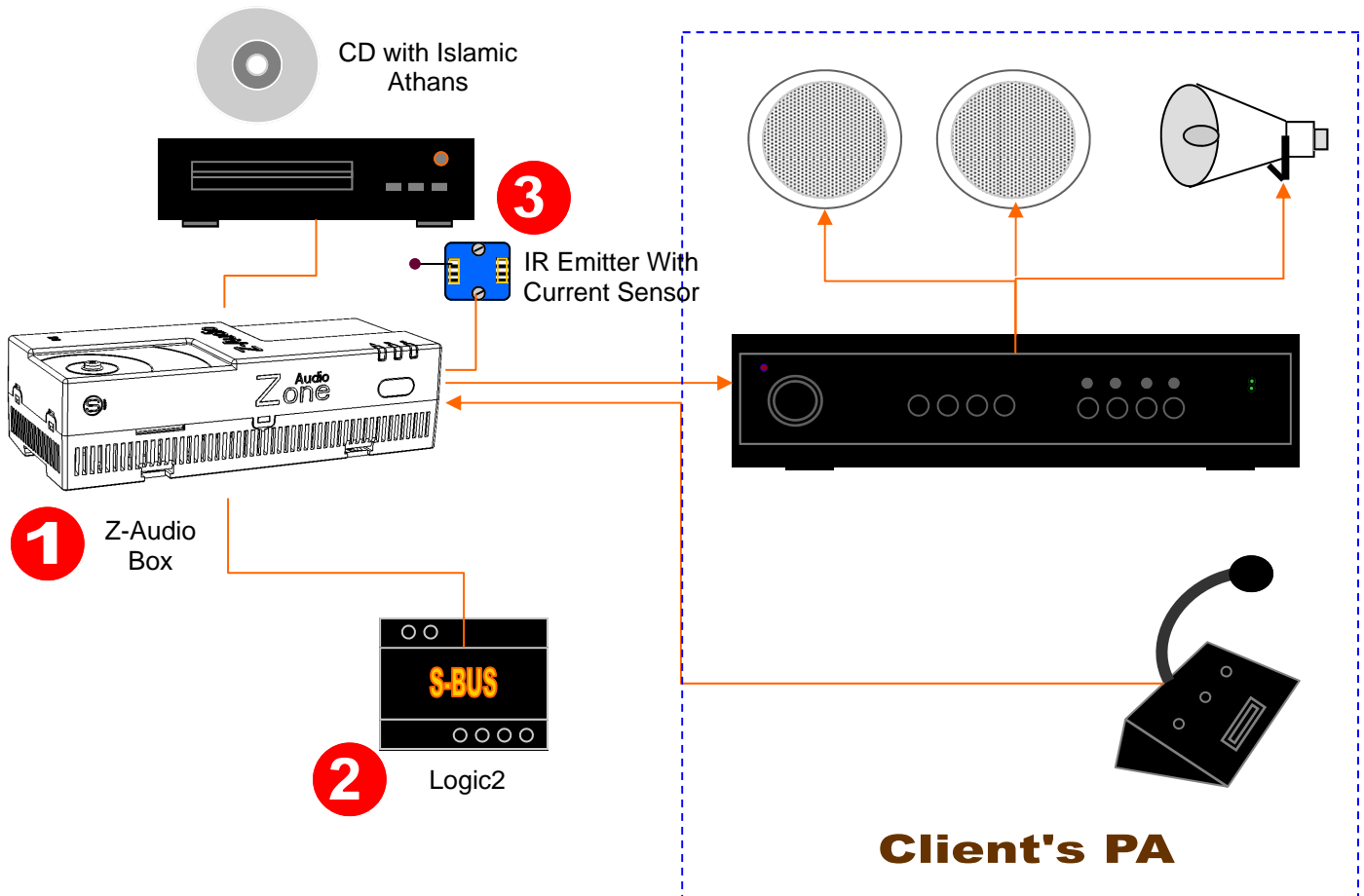
All you Need is to Have is

- 1-Remote controlled DVD/CD Player (A Recorded CD with Different Prayer and Greetings Tracks)
- 2- Infra Red Emitter with Current Sensor
- 3- Z-Audio with Logic Control

STEPS of IMPLIMENTATION

S-Logic Control Is Ready Hundreds Of Timers and Flags that can be programmed according to Day Mornings, Weekends, Dewali, Christmas, New Year, Birthdays + Grand father Greeting. Steps To Do:

- 1- Connect System to Your PA System as Per the Diagram Below
- 2- Program the IR Codes of CD Player for On/Off, Track # Selection, Play, Stop
- 3- Time the Period Needed to ON the CD Player, Choose track#, Load it, and Play it till its End
- 4- Make All Flags In The Program of the Logic Module One for Each Prayer Announcement Type
- 5- Program The Timers according to Day Type and Implement Flags.
- 6- At Time of Prayer, corresponding Flag start, At End of Flag Power Off system till next Prayer Time
(Simply: Prayer Time = On System, Play Track, Off System)



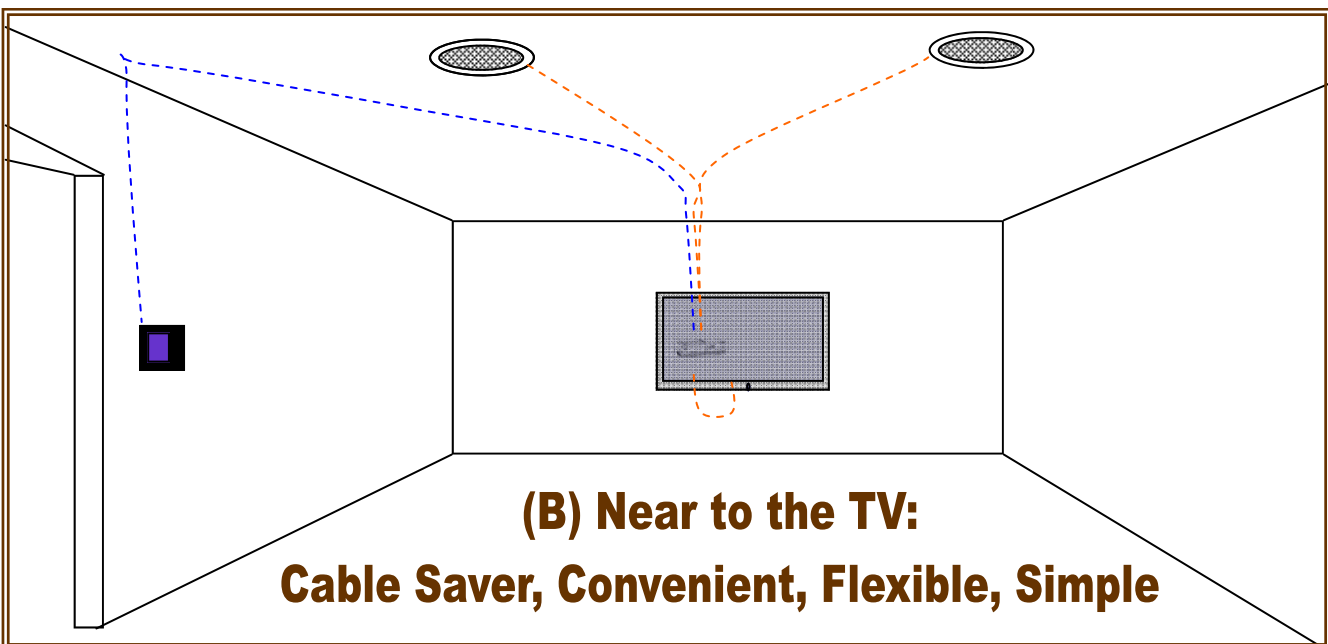
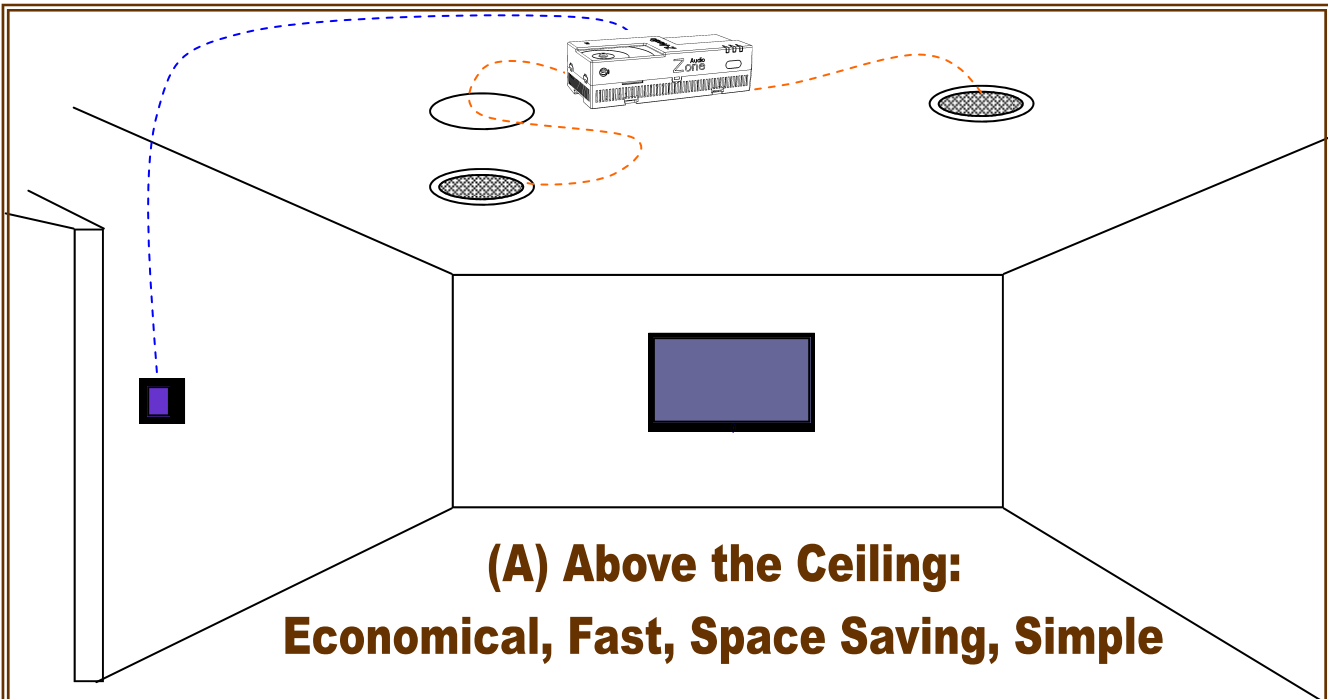
Ingredients: 1 Z-Audio, 1 IR Emitter, 1 Logic Module, 1 Power Supply, 1 CD Player and Prayers CD (Client PA)

Where Can I Install Z-Audio?

We have Many Suggestions but the rest belong to your Creativity

Z-Audio Is Designed To be installed In Visible, Hidden, Stand Alone or Networked. Some of The Places:

- A) Above Ceiling Next To the Speaker Using Speaker Opening as the Access Panel
- B) Next To or behind Television Set or in the same cabinet of Media Players
- C) Centrally In The Control Room
- D) In The Zone DB as Per the Innovative S-BUS Green Building Wiring Economic Method

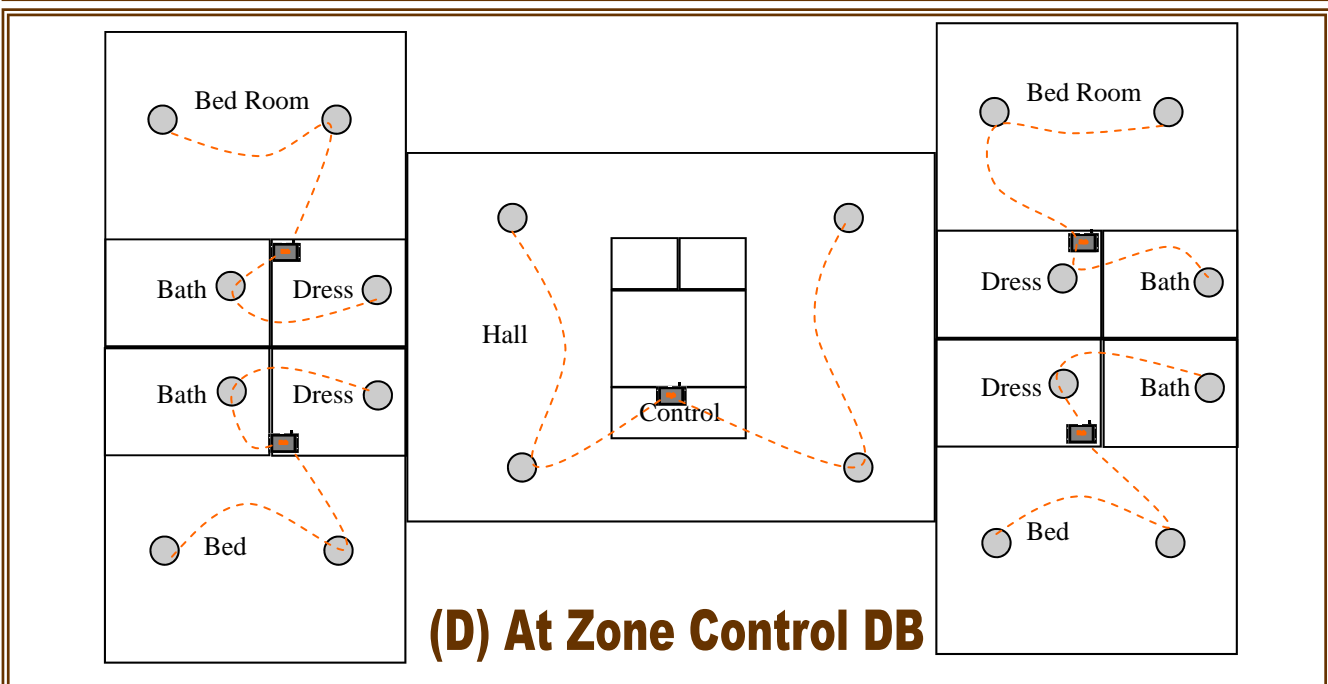
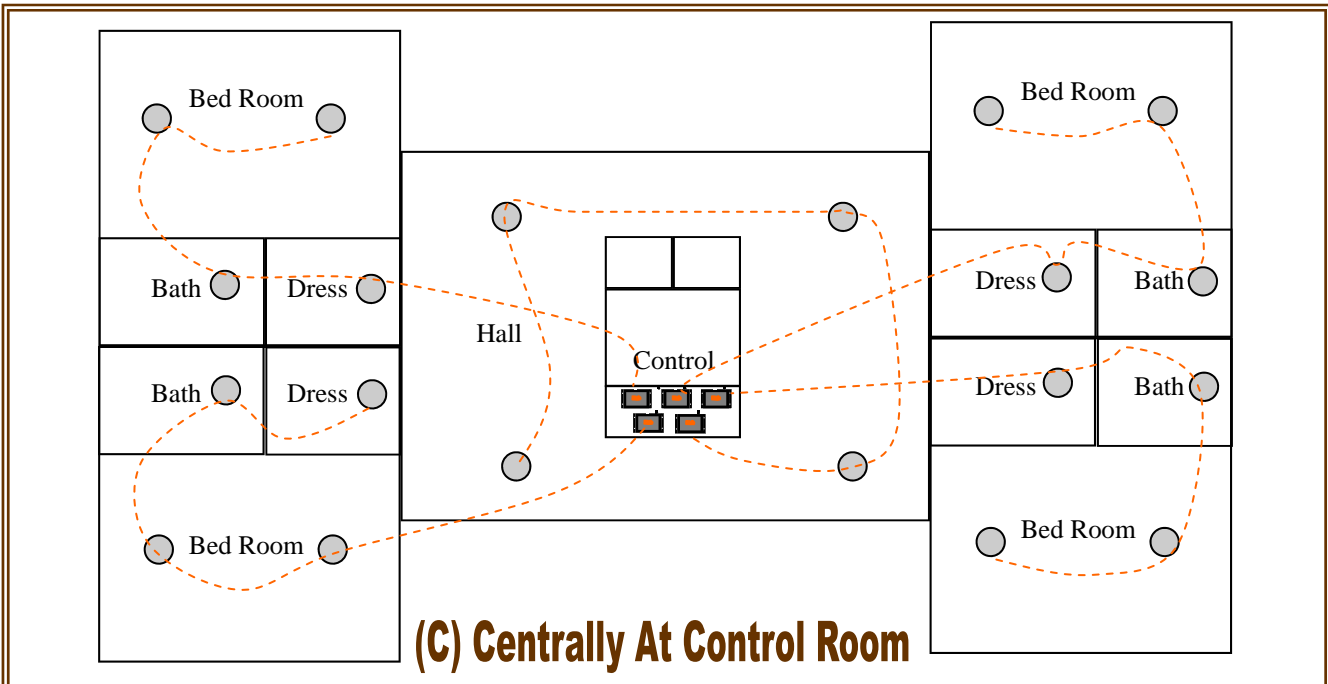


Where Can I Install Z-Audio?

We have Many Suggestions but the rest belong to your Creativity

Z-Audio Is Designed To be installed In Visible, Hidden, Stand Alone or Networked. Some of The Places:

- A)** Above Ceiling Next To the Speaker Using Speaker Opening as the Access Panel
- B)** Next To or behind Television Set or in the same cabinet of Media Players
- C)** Centrally In The Control Room
- D)** In The Zone DB as Per the Innovative **S-BUS Green Building Wiring Economic Method**



How To Connect?

Terminating and Controlling the Zone-Audio2 Units is How to Connect:

A) Hard Connects: (LAN (RJ 45), Audio in (RCA), PA (RCA), Power Supply Screw In Terminal & Jack, FM Radio Antenna (RF Jack), Balanced Audio Out (RCA), SBUS (Screw terminal))

B) Soft Connects: (PC, DDP, ANDROID, I phone, I pad, SMS)

